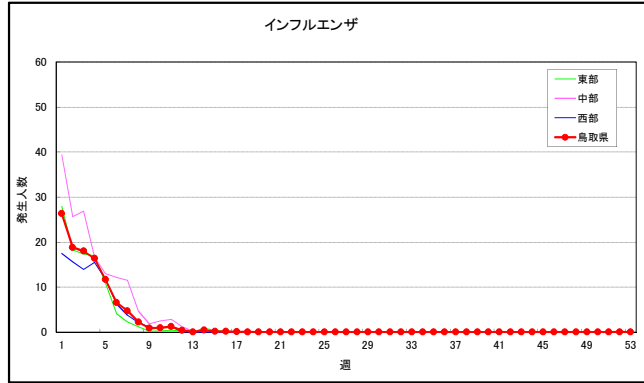
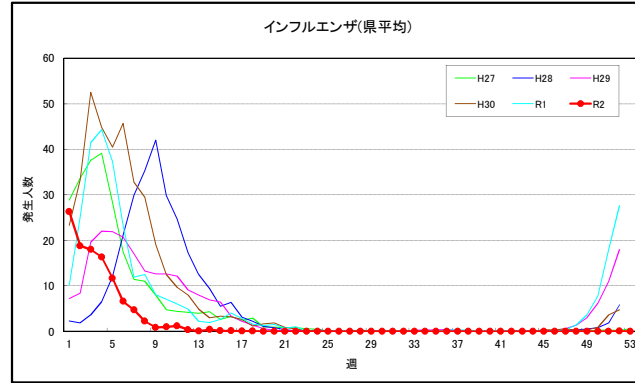


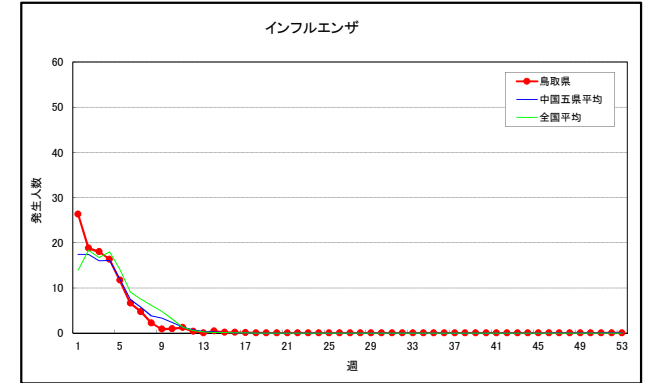
地区別発生状況



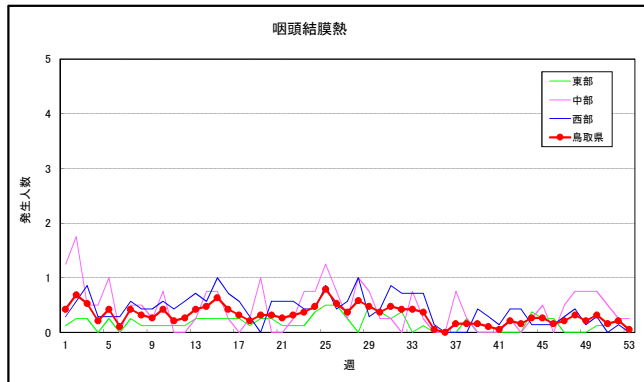
年次別発生状況



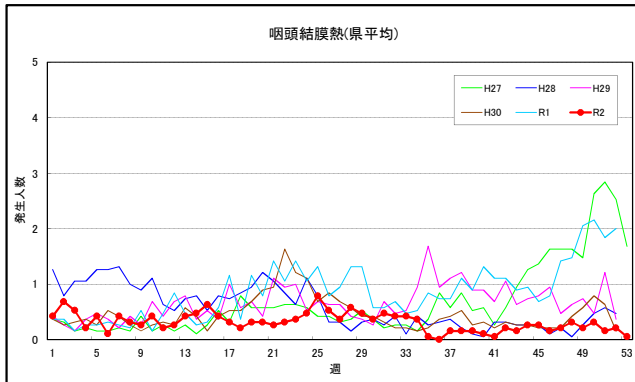
鳥取県・中国五県平均・全国平均の比較



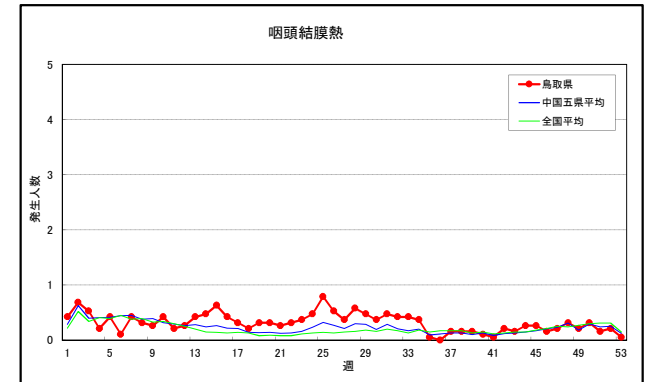
咽頭結膜熱



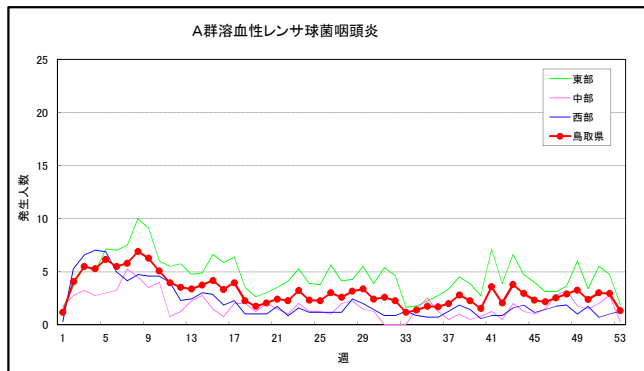
咽頭結膜熱(県平均)



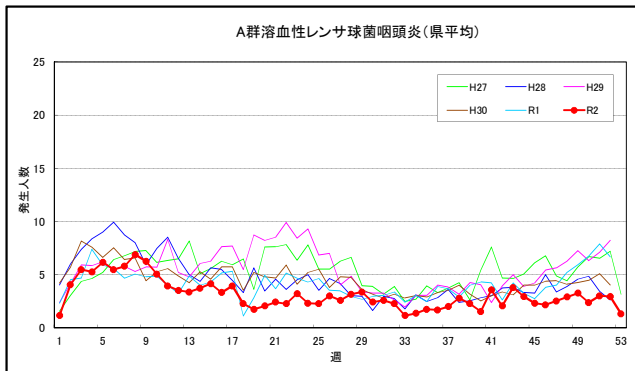
咽頭結膜熱



A群溶血性レンサ球菌咽頭炎



A群溶血性レンサ球菌咽頭炎(県平均)



A群溶血性レンサ球菌咽頭炎

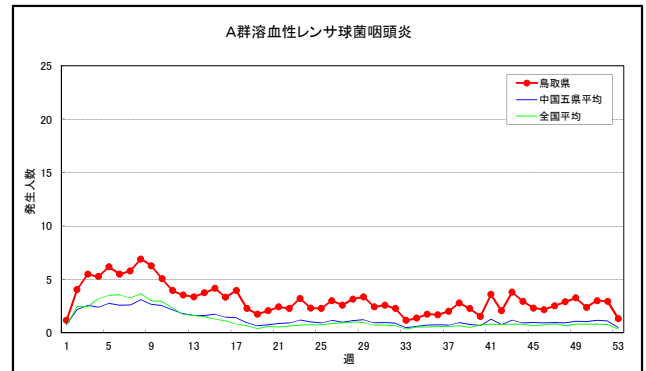
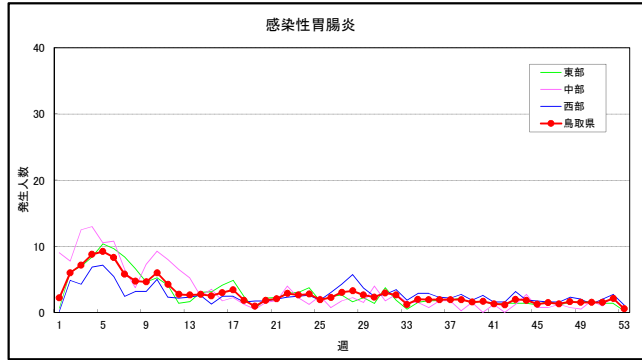
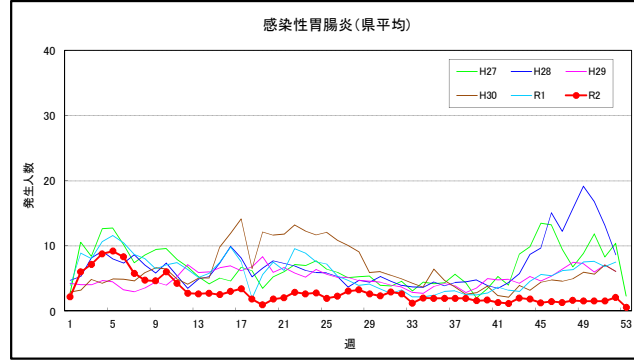


図1 令和2年定点把握感染症発生状況(疾病別:定点当たり)

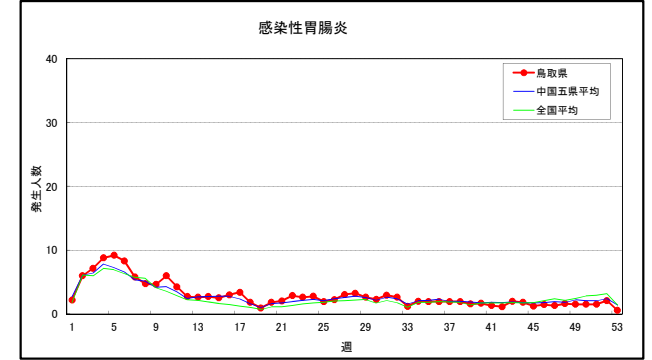
地区別発生状況



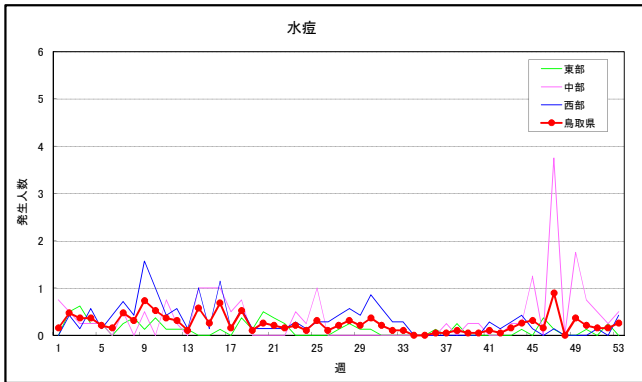
年次別発生状況



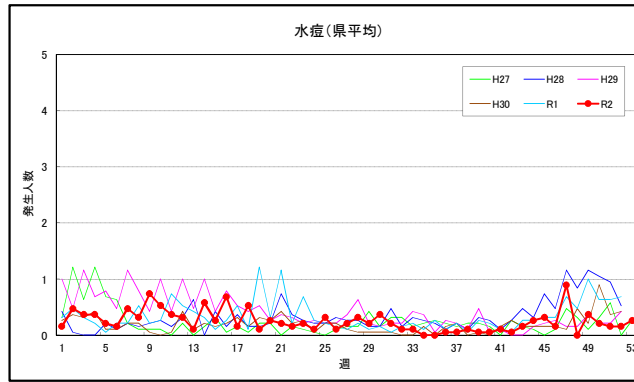
鳥取県・中国五県平均・全国平均の比較



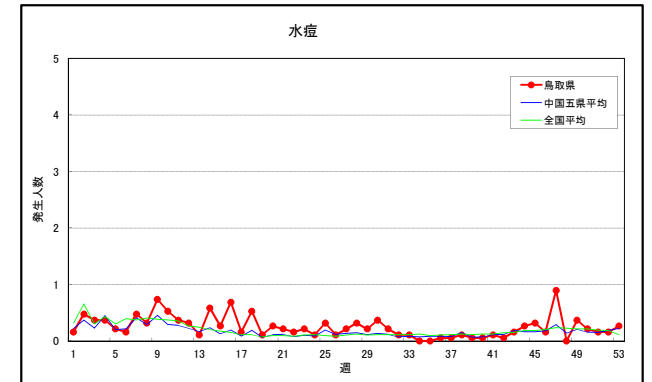
水痘



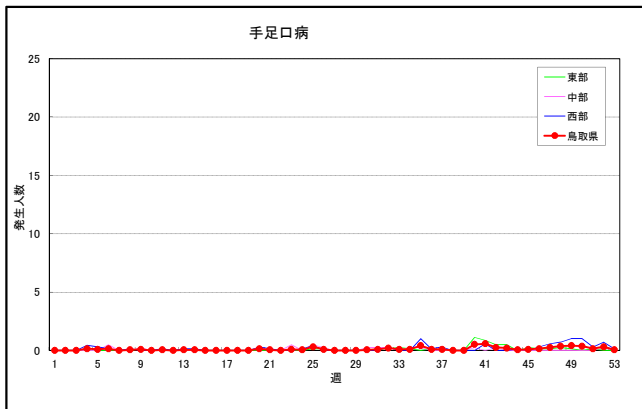
水痘(県平均)



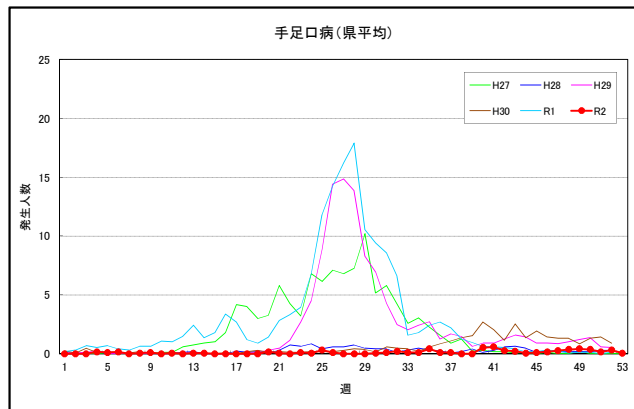
水痘



手足口病



手足口病(県平均)



手足口病

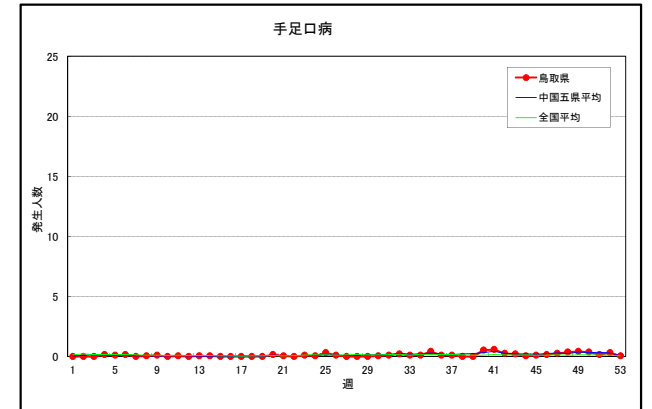
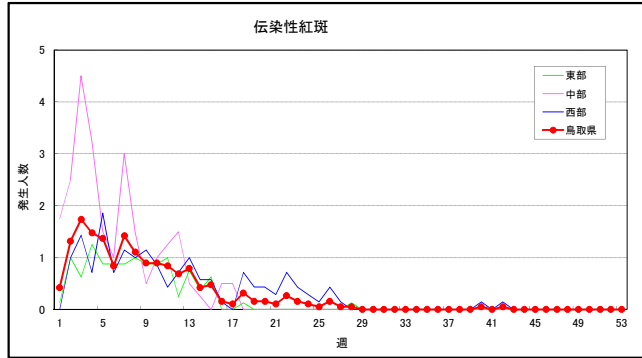
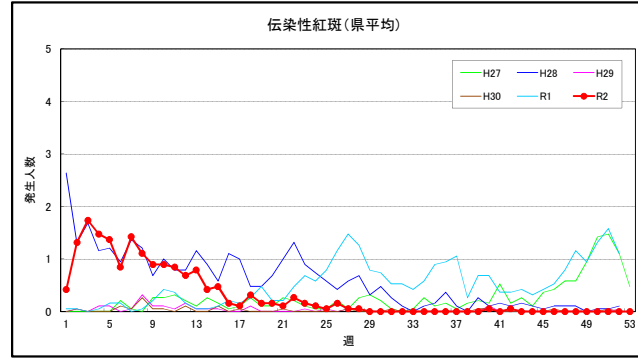


図1 令和2年定点把握感染症発生状況(疾病別: 定点当たり)

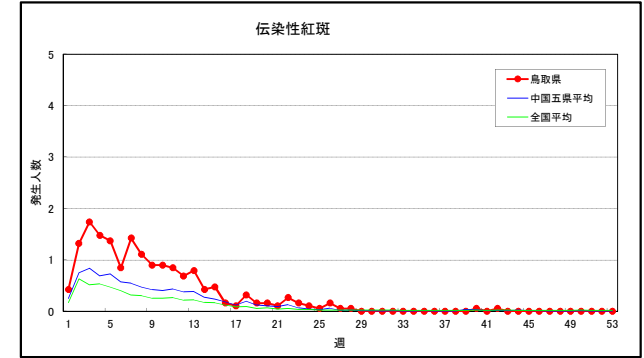
地区別発生状況



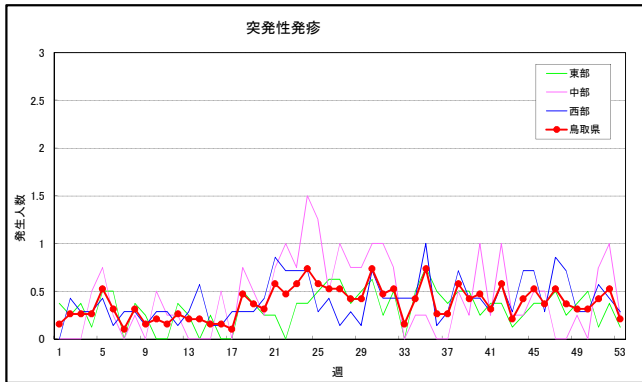
年次別発生状況



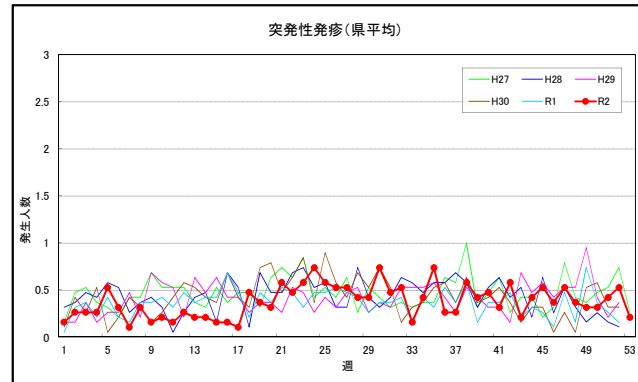
鳥取県・中国五県平均・全国平均の比較



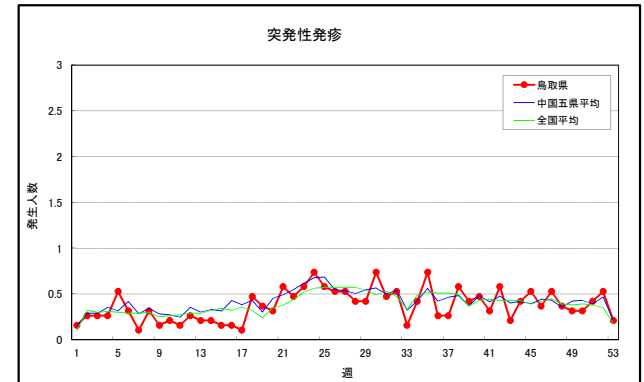
突発性発疹



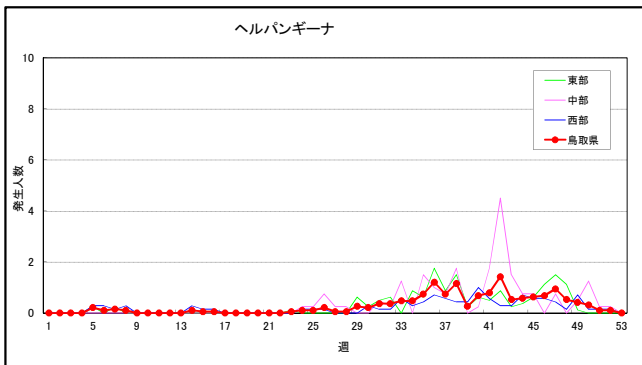
突発性発疹(県平均)



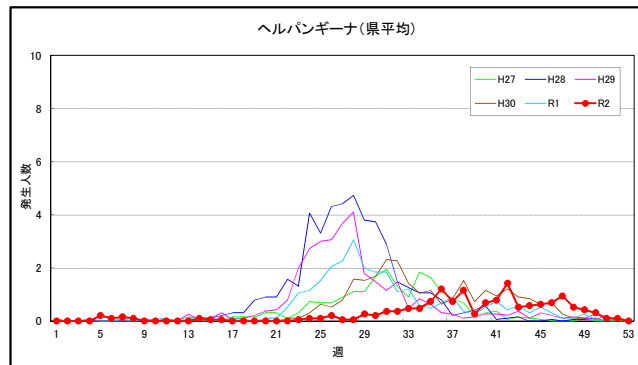
突発性発疹



ヘルパンギーナ



ヘルパンギーナ(県平均)



ヘルパンギーナ

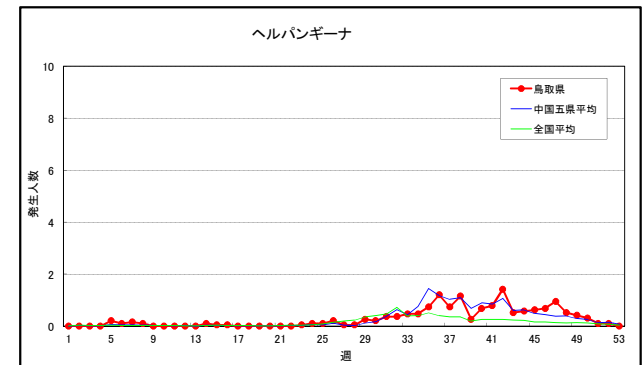
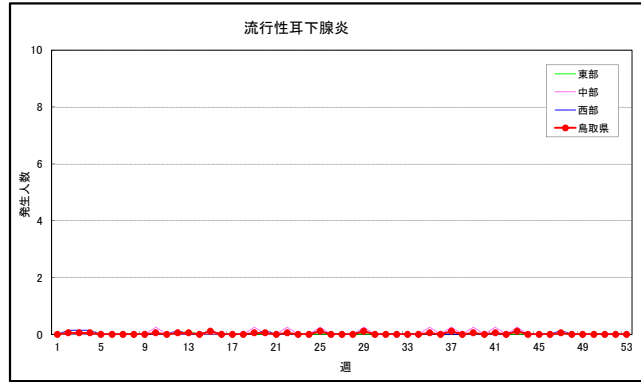
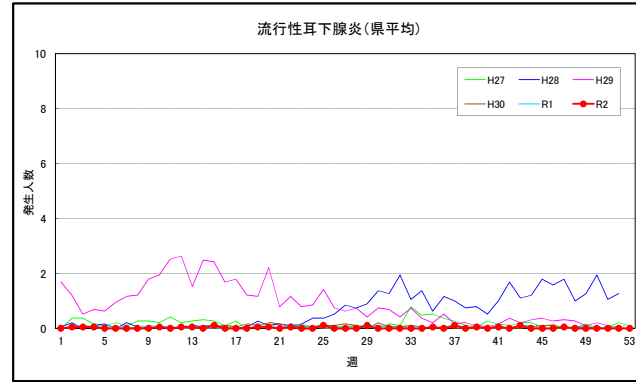


図1 令和2年定点把握感染症発生状況(疾病別:定点当たり)

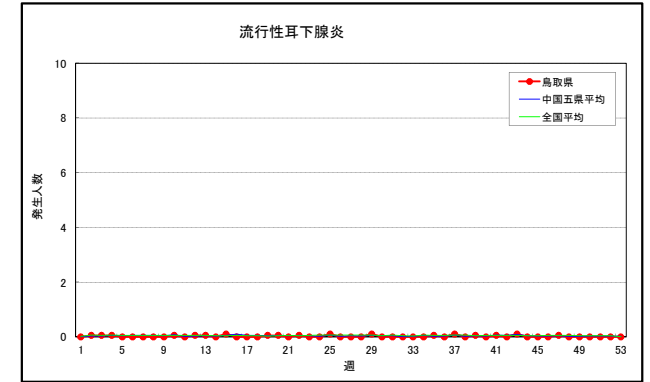
地区別発生状況



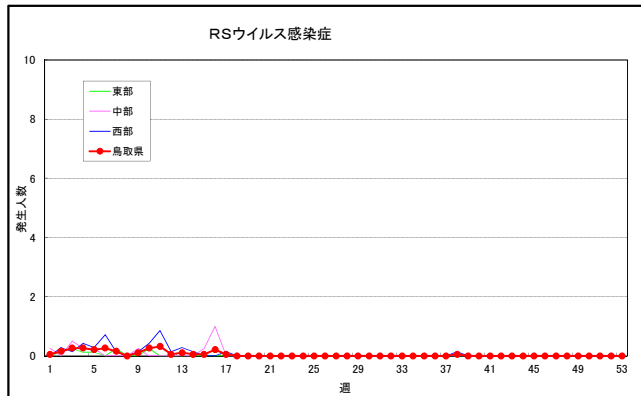
年次別発生状況



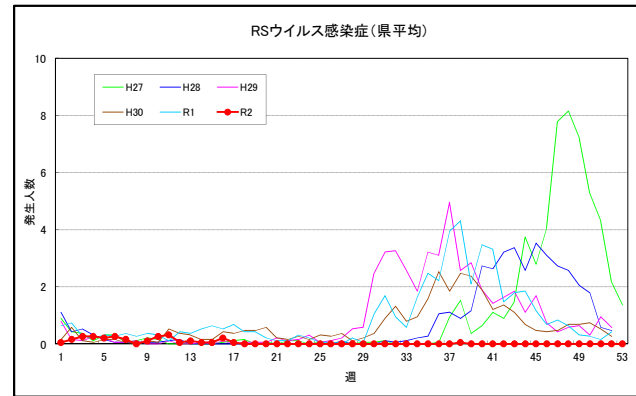
鳥取県・中国五県平均・全国平均の比較



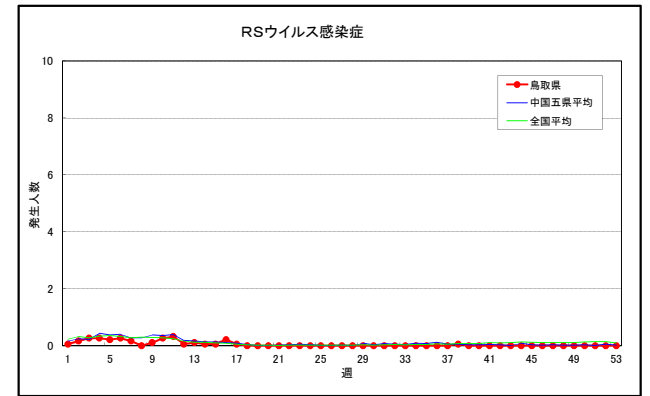
RSウイルス感染症



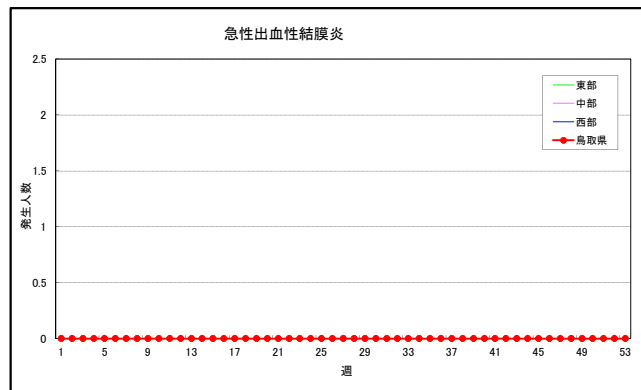
RSウイルス感染症(県平均)



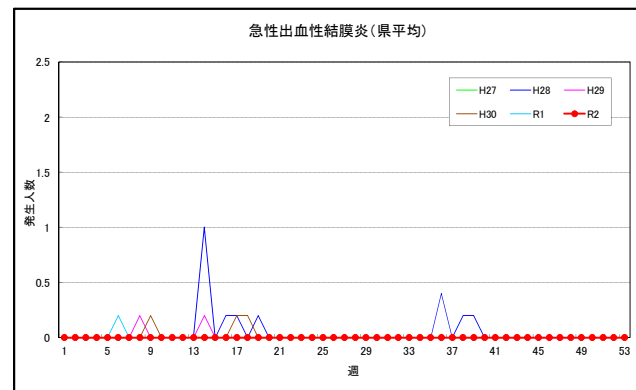
RSウイルス感染症



急性出血性結膜炎



急性出血性結膜炎(県平均)



急性出血性結膜炎

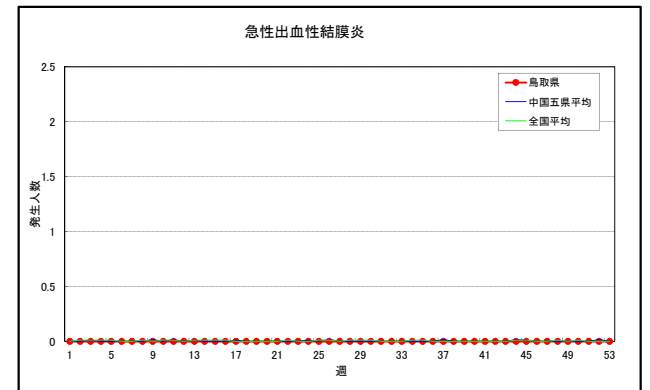
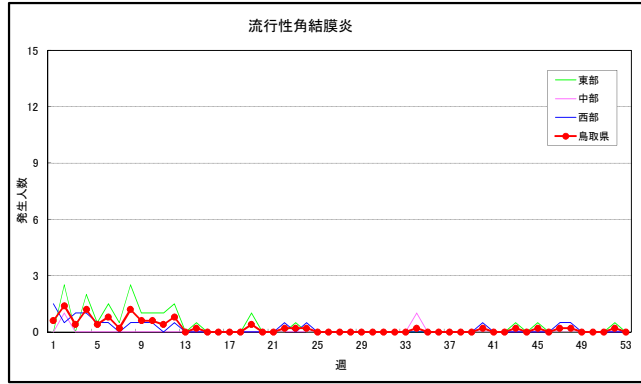
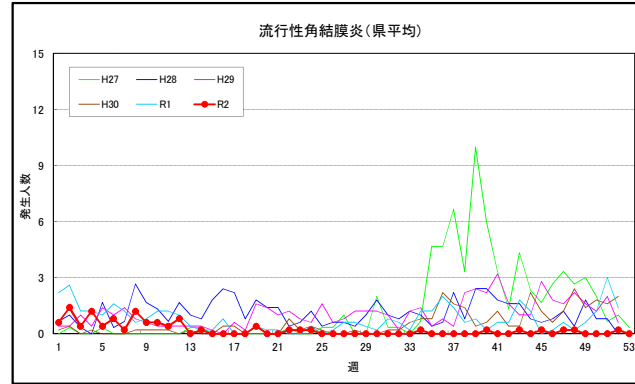


図1 令和2年定点把握感染症発生状況(疾病別:定点当たり)

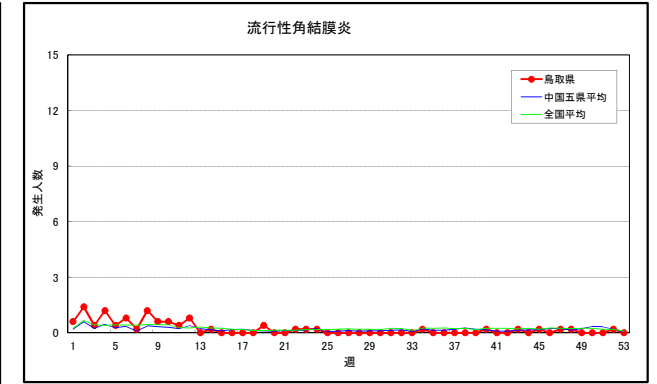
地区別発生状況



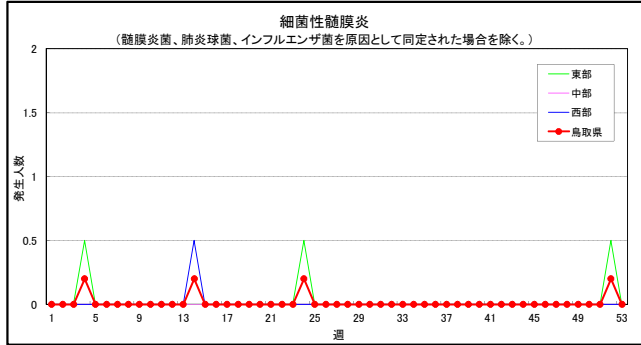
年次別発生状況



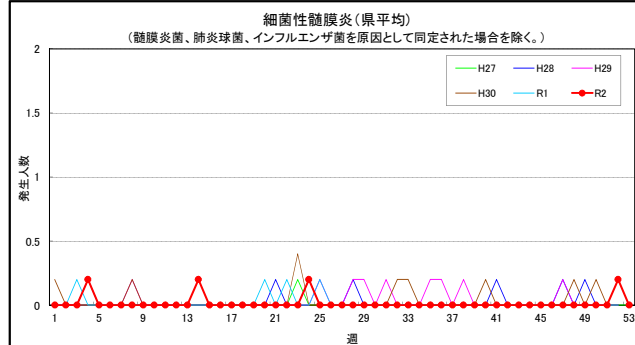
鳥取県・中国五県平均・全国平均の比較



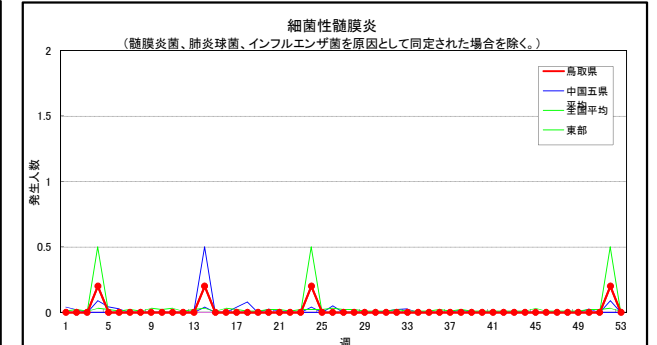
細菌性髄膜炎
(髄膜炎菌、肺炎球菌、インフルエンザ菌を原因として同定された場合を除く。)



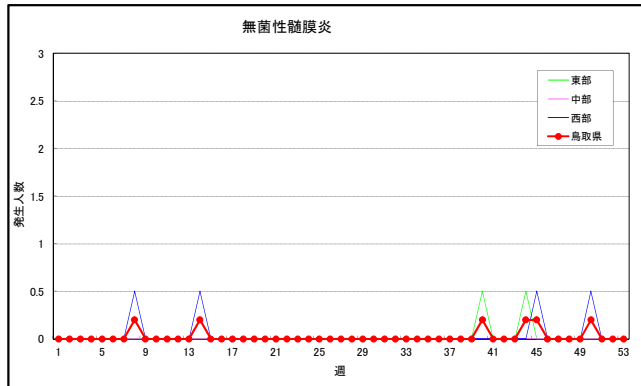
細菌性髄膜炎 (県平均)
(髄膜炎菌、肺炎球菌、インフルエンザ菌を原因として同定された場合を除く。)



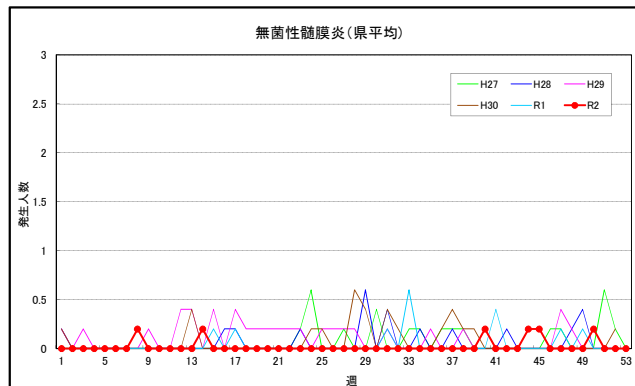
細菌性髄膜炎
(髄膜炎菌、肺炎球菌、インフルエンザ菌を原因として同定された場合を除く。)



無菌性髄膜炎



無菌性髄膜炎 (県平均)



無菌性髄膜炎

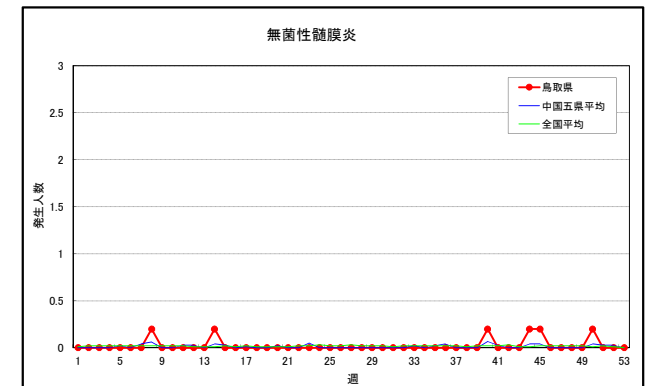
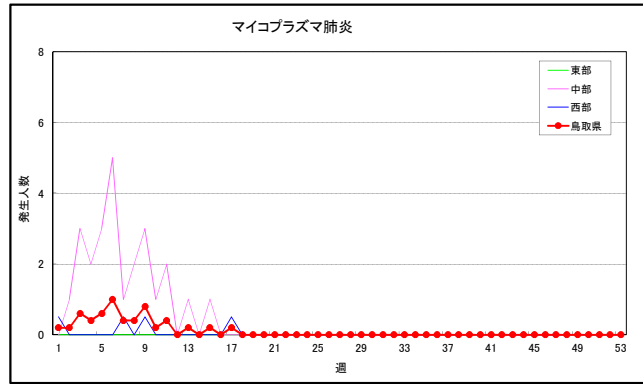
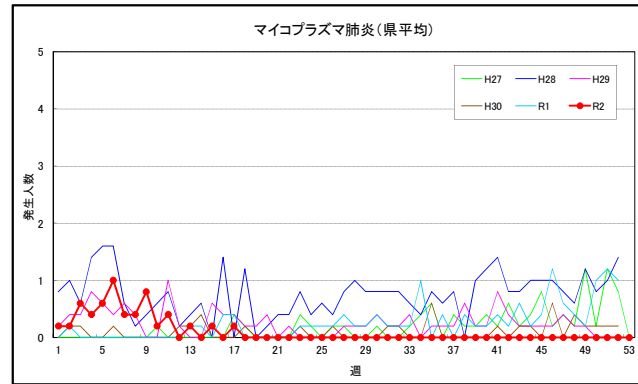


図1 令和2年定点把握感染症発生状況(疾病別:定点当たり)

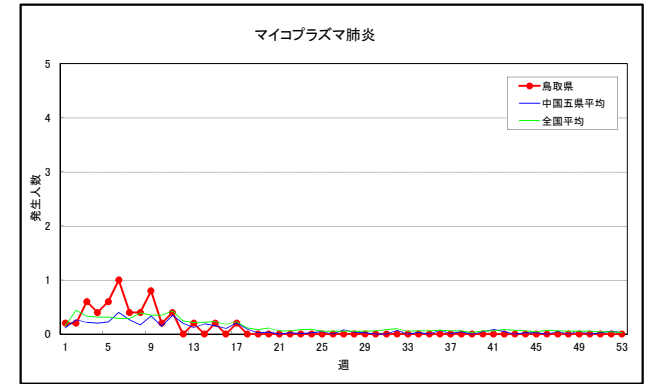
地区別発生状況



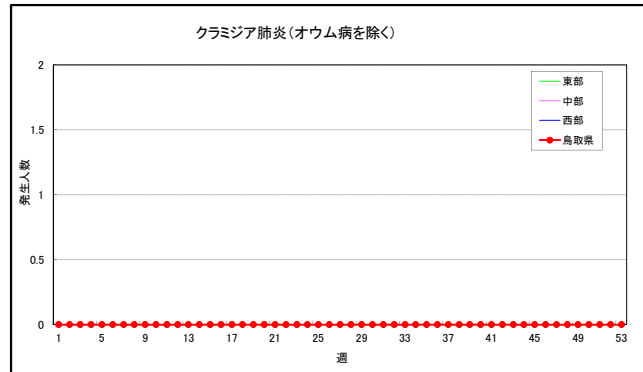
年次別発生状況



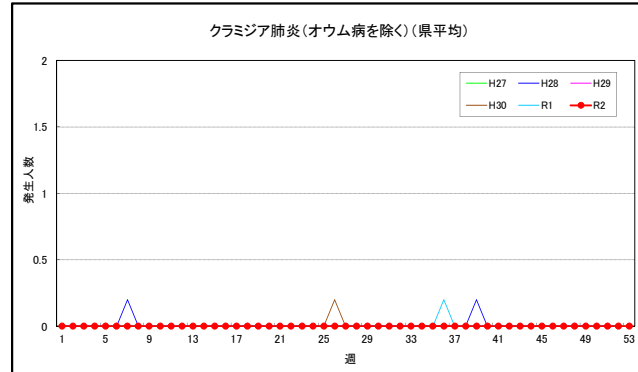
鳥取県・中国五県平均・全国平均の比較



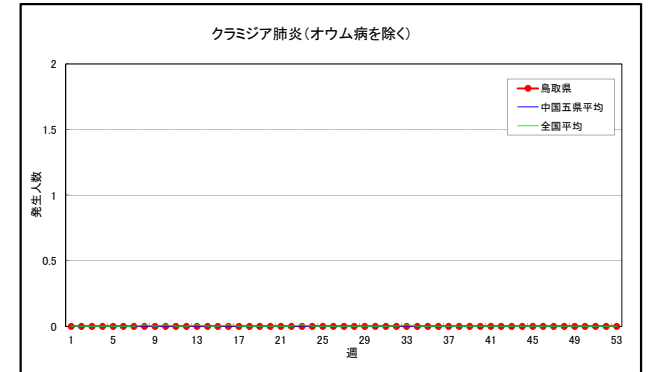
クラミジア肺炎(オウム病を除く)



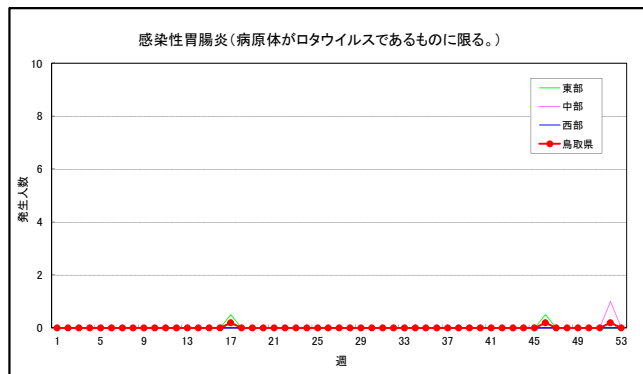
クラミジア肺炎(オウム病を除く)(県平均)



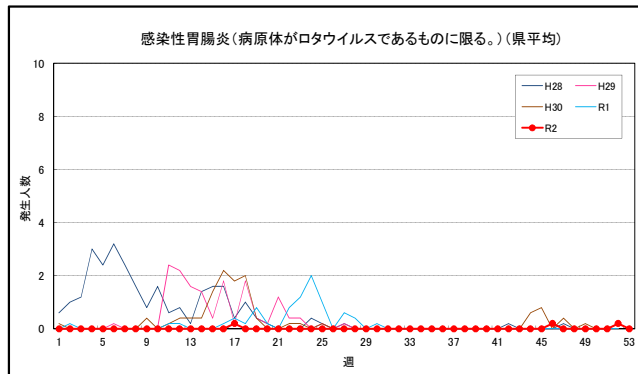
クラミジア肺炎(オウム病を除く)



感染性胃腸炎(病原体がロタウイルスであるものに限る。)



感染性胃腸炎(病原体がロタウイルスであるものに限る。)(県平均)



感染性胃腸炎(病原体がロタウイルスであるものに限る。)

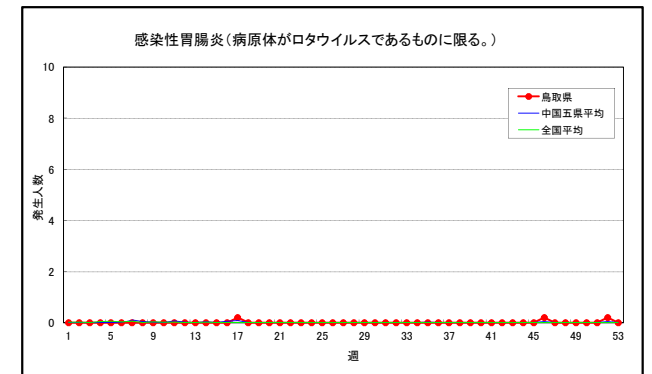


図1 令和2年定点把握感染症発生状況(疾病別:定点当たり)