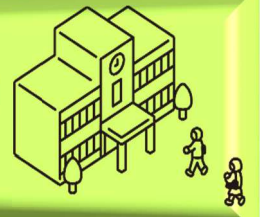


Tottori Prefecture's "Evening Middle School"



The Tottori Prefectural Board of Education will create this "Evening Middle School" for individuals who would like to experience school-based learning once again. The Board hopes more people will know about this opportunity for people to study as appropriate to their individual circumstances.

April of 2024

Expected Opening

What sort of school is it?



It's a middle school similar to those already established in Tottori.



Who can attend?

Tottori residents, regardless of nationality, above the age of compulsory education (15), who:

- have not completed elementary or middle school
- have graduated from middle school but were unable to learn sufficiently due to illness or other reasons



School Overview



Use a computer or tablet



- Tuition: Free
- Class Style: 9 subjects, 5 days per week (at learners' own pace)
- Certification: Middle School Diploma (earned in 1 to 3 years)
- Location: Tottori Pref. Education Ctr. (5-20 I Koyama Kita, Tottori)

Learning Begins Here

At the Ministry of Education website from "Ever heard of Evening Middle School?"



Time Table (Sample Schedule)

17:30~17:40	10 min.	School Activities
17:45~18:25	40 min.	Period 1
18:30~19:10	40 min.	Period 2
19:10~19:20	10 min.	Break
19:20~20:00	40 min.	Period 3
20:05~20:45	40 min.	Period 4

Tentative School Program



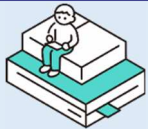
2024 《Academic Year 2024》
Beginning April

2023 《Academic Year 2023》



- ★Explanatory Meeting
- ★Individual Consultations & Matriculation
- ★Student Recruitment
- ★New Entrant Interviews

etc



2022 《Academic Year 2022》

- ☆Evening Middle School Symposium(with Specialists)
- ☆Public Explanatory Meeting
- ☆Public Comments (Feedback from Local Residents)
- ☆Proposals for School Name and Motto

etc

Q1 What type of learning goes on here?

The curriculum covers all middle school subjects.

Students can study according to their individual needs and conditions.

Remedial elementary school coursework may also be covered if needed.

School trips and sports day are also expected to be included in the program.



Q2 How much does it cost?

As with all state middle schools, there is neither tuition nor any fee for textbooks.

Students may need to pay for certain materials or help fund certain events.



Q3 Do I have to attend for three full years?

In principle, the program is for three years, five days per week.

If you have attended middle school but quit partway through, you may be able to enter the program as a second-year student.



Q4 What should I do to get started?

If you're interested, come to the explanatory meeting to learn what it's all about.

You can have a look at the school and hear about the program in detail.

Feel free to telephone us if there's anything else you'd like to know.



For information and enquiries, contact the Tottori Prefectural Board of Education, Elementary and Junior High School Division The Tottori Prefectural Junior High School Night School Preparation Office

Address : 1-271 Higashi-machi, Tottori City
TEL : 0857-26-7500 FAX : 0857-26-8170
E-mail : nightschool-j@pref.tottori.lg.jp



Look here to learn more about Evening Middle School

